

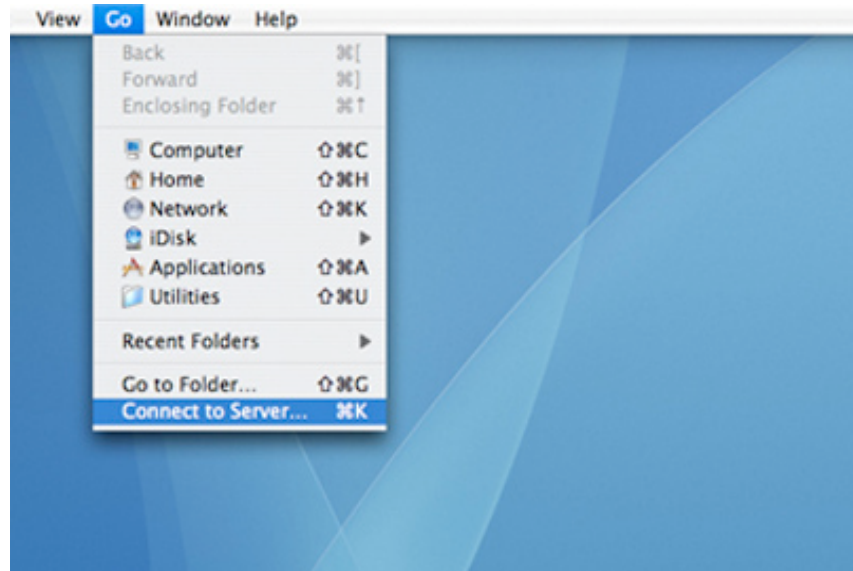
ART LABS

SCHOOL OF ART, DESIGN, AND ART HISTORY

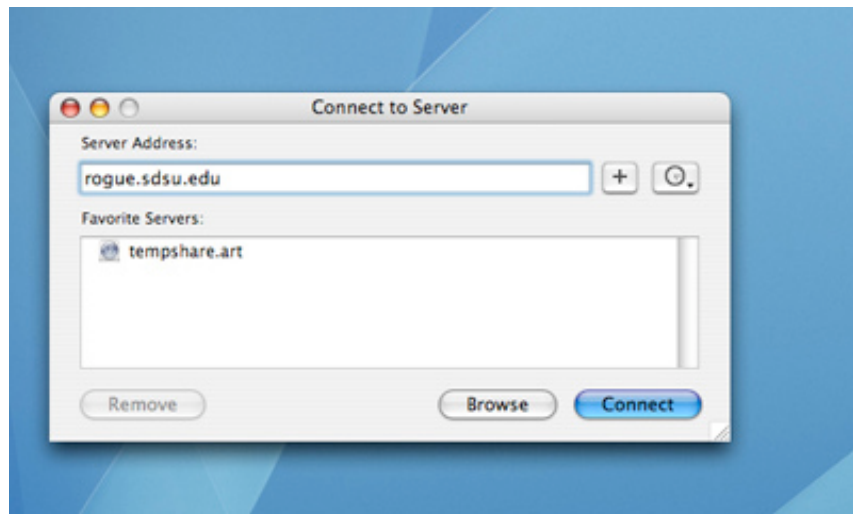
5500 CAMPANILE DRIVE
SAN DIEGO, CA 92182-4805
O::619.594.2192
F::619.594.1217
E::LCOTNOIR@MAIL.SDSU.EDU

INSTRUCTIONS TO CONNECT TO THE SERVER FROM A MAC:

1. Click on the desktop to get into the finder and select Go
2. From the drop down menu select Connect to Server.



3. In Server Address type: rogue.sdsu.edu and click connect.



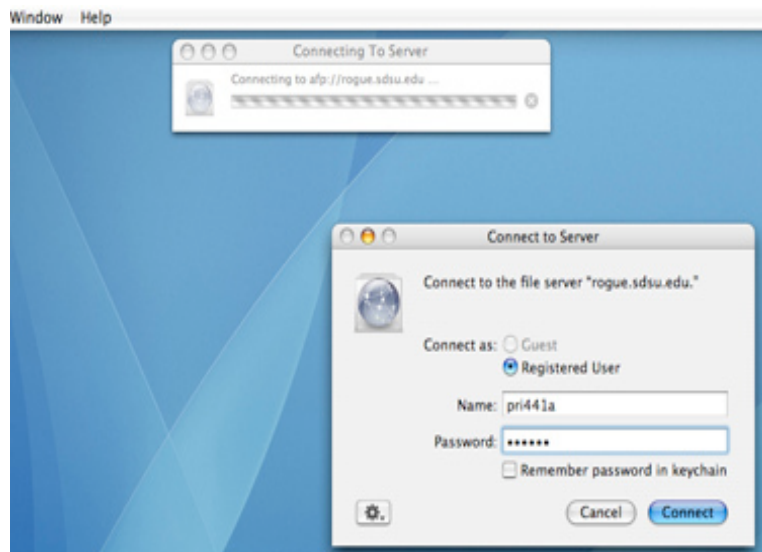
ART LABS

SCHOOL OF ART, DESIGN, AND ART HISTORY

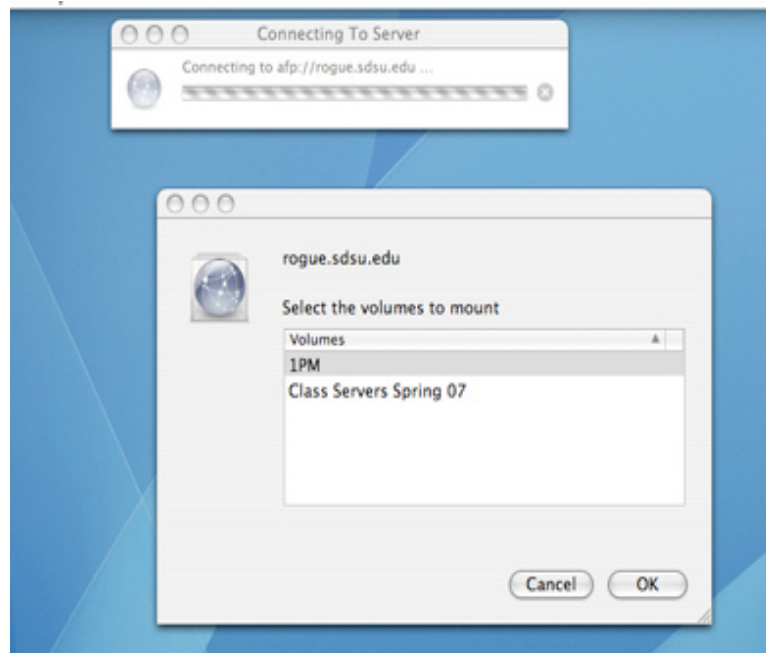
5500 CAMPANILE DRIVE
SAN DIEGO, CA 92182-4805
O::619.594.2192
F::619.594.1217
E::LCOTNOIR@MAIL.SDSU.EDU

4. Type your user name and password. The user name corresponds to the three first letters of your instructor's last name followed by the number of your class and the letter a, b or c which represents the section of the same class depending on the time. In the following example:

User Name: Pri441a (Russ Prior, A441, a (am))



5. Select the volume that corresponds to the time of your class. Then click ok.

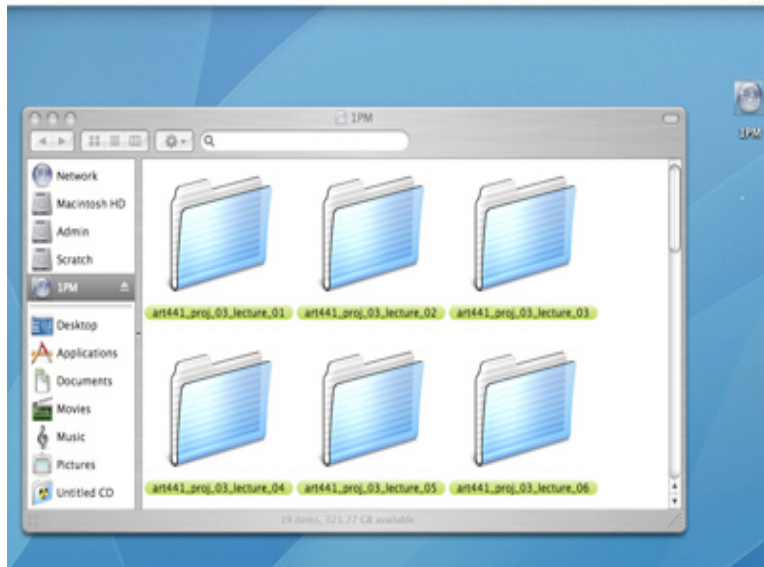


ART LABS

SCHOOL OF ART, DESIGN, AND ART HISTORY

6. You can open the icon that appears on your desktop and search for specific files.

5500 CAMPANILE DRIVE
SAN DIEGO, CA 92182-4805
O::619.594.2192
F::619.594.1217
E::LCOTNOIR@MAIL.SDSU.EDU



7. Do not work directly on the server. Drag your files to the desktop before opening them.
8. Once you are done, disconnect from the server by dragging the icon to the trash.